



GMT MONTHLY MEMBERSHIP PROGRESS REPORT

Results as of: 7/31/2018

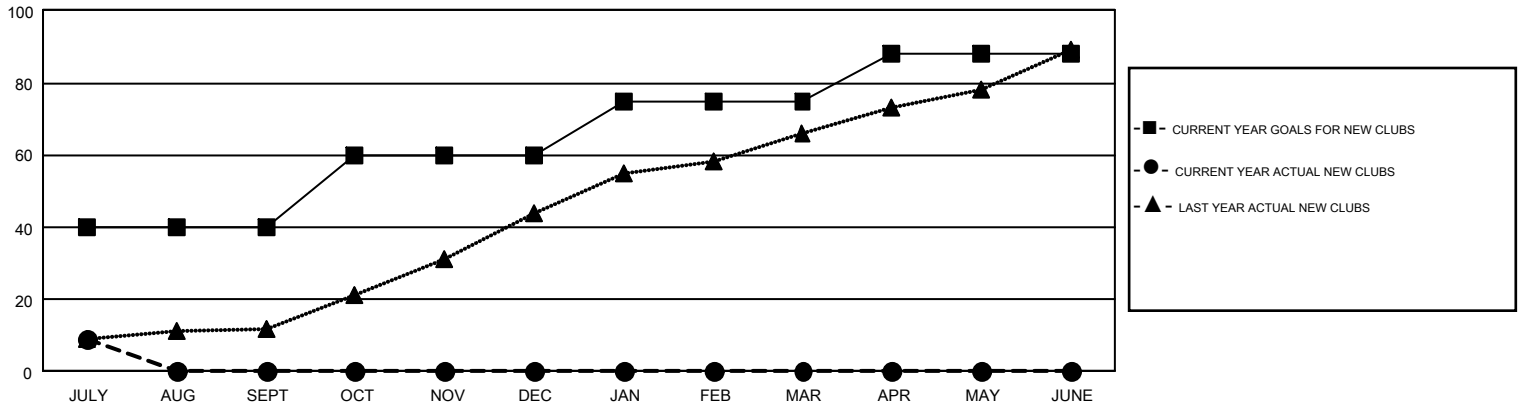
GMT Constitutional Area 6, Group E

GMT: VASUDEV VALAWALKAR

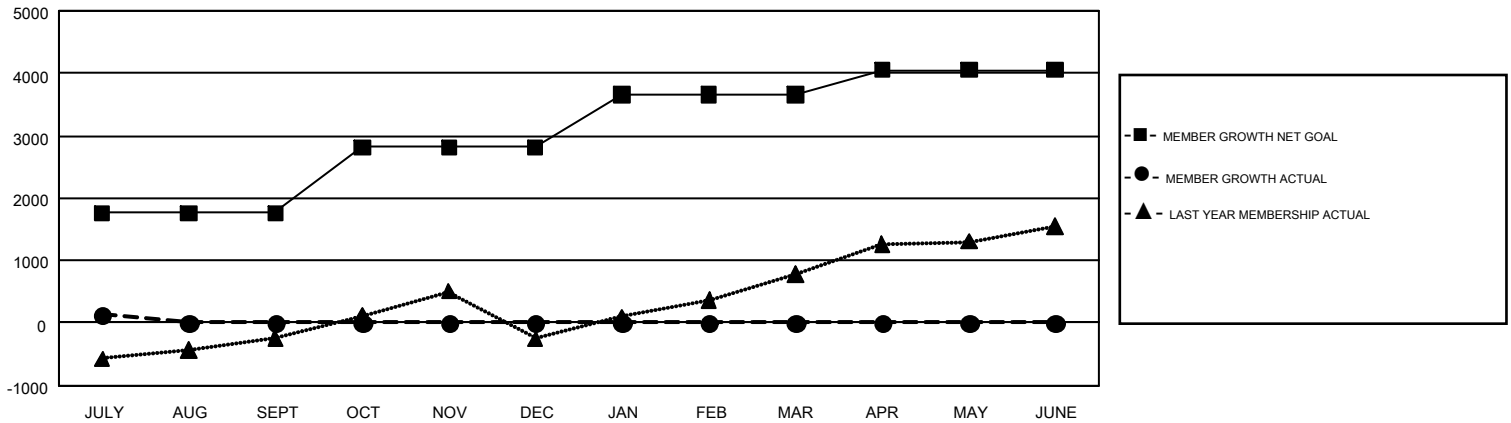
REPORT DOES NOT INCLUDE CLUBS IN UNDISTRICTED AREAS.

Clubs				Members			
RESULTS FOR 2018-2019				RESULTS FOR 2018-2019			
QUARTER	NEW CLUB GOAL	NEW CLUBS	DROPPED CLUBS	QUARTER	MEMBER GROWTH NET GOAL	MEMBER GROWTH ACTUAL	DROPPED MEMBERS ACTUAL (including transfers)
JULY/AUG/SEPT	40	9	1	JULY/AUG/SEPT	1,761	660	474
OCT/NOV/DEC	20	0	0	OCT/NOV/DEC	1,058	0	0
JAN/FEB/MAR	15	0	0	JAN/FEB/MAR	844	0	0
APR/MAY/JUNE	13	0	0	APR/MAY/JUNE	392	0	0

GOALS AND ACTUAL NEW CLUBS CUMULATIVE



GOALS AND ACTUAL MEMBERS CUMULATIVE



DROPPED CLUBS: 1	128 CLUBS OF 1,073 ADDED 1 OR MORE NEW MEMBERS	GENDER DISTRIBUTION MALE 25,757 (77.11%) FEMALE 7,645 (22.89%)
DROPPED MEMBERS DECEASED 16 CLUB CANCELLED 8 OTHER 450 <hr/> TOTAL 474	CLICK HERE FOR CUMULATIVE MEMBERSHIP DATA	TOTAL FAMILY UNIT MEMBERS 10,221 FAMILY MEMBERS PAYING HALF DUES 5,456